

## **Software Utilities**

The mainboard comes with helpful supporting software, contained in the CD Pro, to promote your system performance. This chapter introduces each of them with the installation procedures.

### **Starting Installation**

To run each feature, simply click on the wanted software item in the main menu that will appear on your monitor screen automatically when it is in your CD-ROM drive. Pressing each button will start the installation of the corresponding software tool. If your mainboard did not support the feature, such as onboard audio/video/LAN chip; a message box with "function is not supported" appears if the corresponding item on the main menu is chosen.

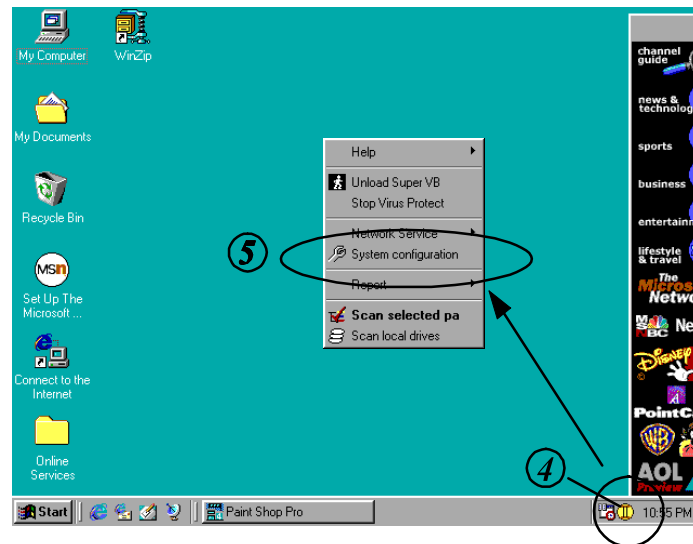
### **Virus Detection Agent**

This mainboard came with a CD-ROM that contained all software tools which helps the mainboard performance. The virus scan tool was changed into **Super VB** that developed by *Paragon Micro International Inc*, instead of **PC-cillin '95/'97**. The web site of *Paragon Micro International Inc*, contained the detail information about the anti-virus tool is [www.goodpoint.com.tw](http://www.goodpoint.com.tw).

1. Click on the Super VB image to start the installation.
2. Click on this button to make an Emergency boot disk after the system was affected by some computer virus.
3. Click on this button to cancel it.



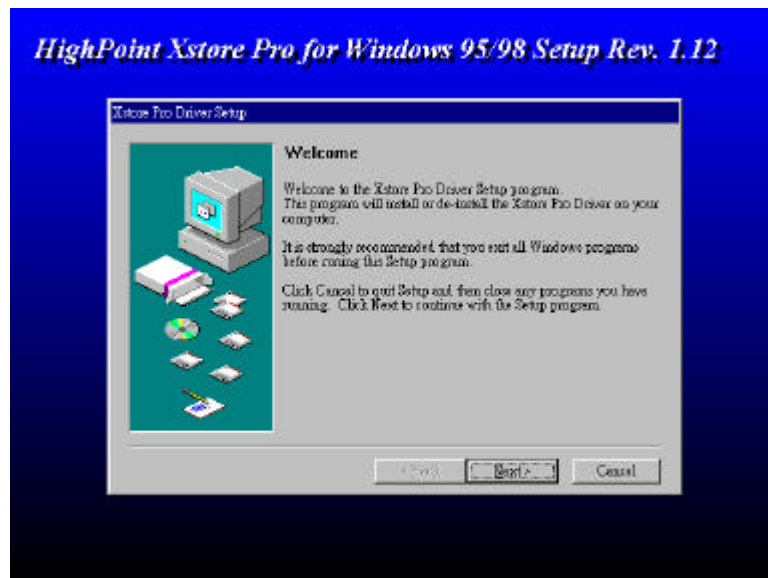
4. Click the right mouse button on the icon after the installation.
5. The item of System Configuration will allow you to set the virus-scanning options. The item Network Service which above System Configuration will help to solve your problem.



## IDE Bus Master

The mainboard package provides Bus Master IDE driver in the software utilities for Windows 95/98 and Windows NT to improve the system performance. Please read the related file first by selecting on the Help button on the main menu before install it.

This mainboard supports Ultra DMA/33; therefore installs default 16-bit drivers when the operating system detects the board and the Bus Master IDE driver not installed, information in the circle like the display below indicates the system will treat it as a standard dual PCI IDE controller. It cannot take advantage of the Ultra DMA. (The attached peripheral devices must support UDMA.)



## Installation

The installation is straight forward by clicking on *IDE Bus Master* item of the main menu. There is no option to be selected while the installation procedure goes. After the installation, the system should be rebooted.

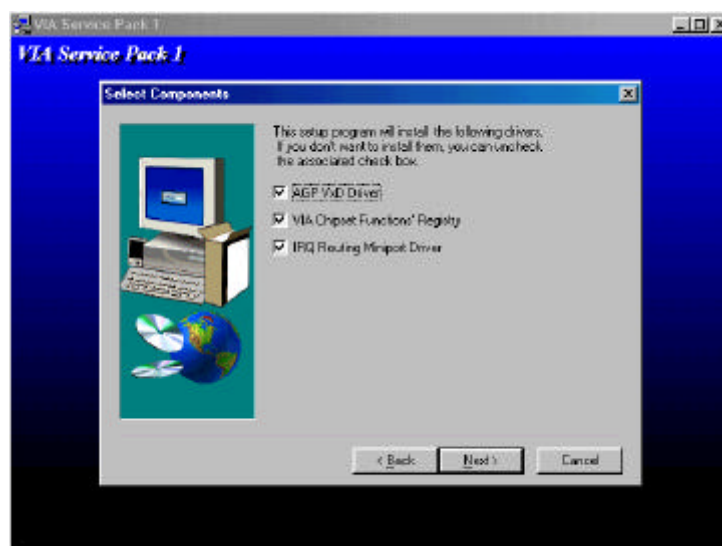
## Patch for Chipset

The mainboard package provides INF update file in the software utilities. This software is needed for the operating system to recognize chipset implemented on this mainboard; otherwise, the question marks in the circle will appear in your Window 95 environment.

### The software tool is necessary when

Core Chip	Windows 95	Windows 98
Intel	needed	not needed
VIA	needed	needed

Please also read the related file first by selecting on the Help item on the main menu before install it.



## Installation

The installation is straight forward. If your core chip a VIA chip, the three options in above menu must be selected. (For the Intel , they are not needed.) After the installation completed, the system must be rebooted.

## AGP VxD Support Utility

This option was provided VIA chipset-based mainboard. Before you start to install it, please read the relating README file first. **This software is necessary if you install an AGP VGA card.**

## System Requirements

The VIA VxD driver is **only supported by Windows 98 and Windows 95 OSR 2.1 (4.00.950 B) or later version.**

*For Windows 95/98 users -*  
you will need to

1. Get "USBSUPP.EXE" from Microsoft, which includes the USB supplement and a new memory manager (VMM32.VxD) needed for the AGP DIME (Direct Memory Execute) feature.
2. Get DirectX 5.0/6.0 from Microsoft. DirectX 5.0/6.0 is the first DirectX version that supports AGP's DIME.
3. Get AGP Master (i.e., AGP VGA) Driver from VGA Supplier.
4. Get "VIAGART.VXD", a virtual device manager which usually will be installed in the following installation procedure of the Windows 95 card driver.

*For Windows NT users -*

VIA VxD will be supported when Windows NT 5.0 is released.  
Installation.

## Adobe Acrobat Reader

This software tool was given for reading the PDF (Portable Document Format) files that are very popular in website.

## Browse CD

Selecting this item will allow users to view the contents of this CD Pro.

## Install Audio/LAN/Video Driver

The option is needed only if your mainboard was equipped Audio/LAN/Video chip. This mainboard did not provided onboard Audio/LAN/Video chip. Users do not have to install its related drivers.

## First AID

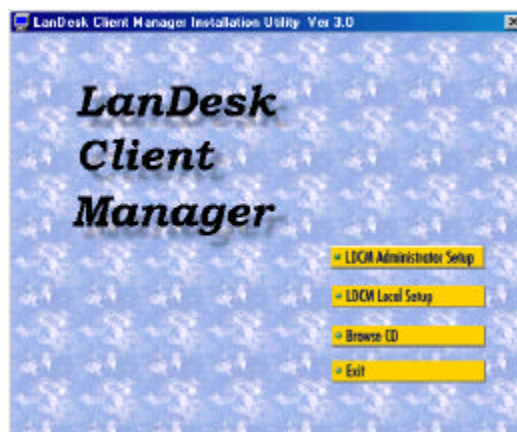
This software utility is used to monitor system's voltages, temperatures and fan speeds for Intel core chips and hardware monitor chips W83782D onboard. It does not cooperate with VIA core chips. It also conflicts with the LDCM software tools. When this utility is installed, the LDCM must be removed first.

### The FIRST AID supports

Core Chip	Windows 95	Windows 98	Windows NT
<i>Intel</i>	Yes	Yes	No
<i>VIA</i>	Yes	Yes	No

## LANdesk Client Manager CD (optional)

The LDCM software must be installed to use the hardware manager. It is installed for remote management over network and is of no use to non-networked systems.



**The LDCM supports**

Core Chip	Windows 95	Windows 98	Windows NT
<i>Intel</i>	Yes	Yes	Yes
<i>VIA</i>	No	No	No

## Specification Overview

Intel LANDesk Client Manager provides real-time PC health monitoring, alerting and self-diagnostics that will make your PCs more reliable and easier to support. Intel LANDesk Client Manager enables you to:

### [Review system inventory](#)

Client Manager enables you to view hundreds of inventoried items. Some of these items are software related, while many others are hardware related.

### [View DMI-compliant component information](#)

Client Manager enables you to view component information that is compliant with the Desktop Management interface (DMI). You can manage third-party DMI-compliant components not included with Client Manager.

### [Back up and restore system configuration files](#)

Client Manager enables you to back up and restore system configuration files. Whenever you plan on changing the system configuration, You can make a backup set. If the system no longer works correctly, after you change the system configuration, you can simply restore the system configuration with the backup set.



**NOTE:** By default the Windows 95 and Windows NT registry files aren't part of the snapshot file list. This means the restoration of a snapshot may not be effective.

### [Troubleshoot](#)

Since Client Manager enables you to View the system inventory, you can easily troubleshoot system problem.

### [Receive notifications for system events](#)

---

Client Manager enables you to receive notification of certain system events. For example, if the system is running low on virtual memory, you are notified of the potential problem.

#### Transfer files to and from client workstations

You have the ability to transfer files to and from client workstations. This is helpful, when update a client workstation driver is needed.

#### Remotely reboot client workstations

Administrators also have the ability to remotely reboot a workstation. This is helpful when you want system configuration changes to take effect.

#### Waking up a computer

You can use Client Manager to "wake up" a remote computer that is powered off or "sleeping" in a reduced-power state.

### Two Options of LDCM Setup

**LDCM Local Setup:** Install software to monitor the *local* system. **(Recommended)** Settings can be auto-detected or changed. The installation of it is straight forward. First select *LDCM Local Setup* in the *main menu*, then all the way down to the end of the installation. Reboot the system.

**LDCM Administrator Setup:** Installs software to monitor PC systems on the network within the same bridge address with Local software installed. The installation of it is straight forward. First select *LDCM Administrator Setup* in the *main menu*, then all the way down to the end of the installation. Reboot the system. The administrator should install both Local and Administrator Software. (First install *Local Setup*, then install *Administrator Setup*.)