

SY-6BA+ Mainboard

Quick Start Guide

Introduction

Hardware
Installation

Quick BIOS
Setup

The SOYO CD

FC Tested To Comply
With FCC Standards
FOR HOME OR OFFICE USE

100% POST CONSUMER
RECYCLED PAPER

SY-6BA+ Mainboard

Pentium® II processor & Celeron™ processors
82440 BX AGP/PCI Mainboard
66&100MHz Front Side Bus supported
ATX Form Factor

Copyright © 1998 by Soyo Computer Inc.

Trademarks:

Soyo is a registered trademark of Soyo Computer Inc. All trademarks are the property of their owners.

Product Rights:

Product and corporate names mentioned in this publication are used for identification purposes only and may be registered trademarks or copyrights of their respective companies.

Copyright Notice:

All rights reserved. This manual is copyrighted by Soyo Computer Inc. You may not reproduce, transmit, transcribe, store in a retrieval system, or translate into any language, in any form or by any means, electronic, mechanical, magnetic, optical, chemical, manual or otherwise, any part of this publication without express written permission of Soyo Computer Inc.

Disclaimer:

Soyo Computer Inc. makes no representations or warranties regarding the contents of this manual. We reserve the right to revise the manual or make changes in the specifications of the product described within it at any time without notice and without obligation to notify any person of such revision or change. The information contained in this manual is provided for general use by our customers. Our customers should be aware that the personal computer field is the subject of many patents. Our customers should ensure that their use of our products does not infringe upon any patents. It is the policy of Soyo Computer Inc. to respect the valid patent rights of third parties and not to infringe upon or assist others to infringe upon such rights.

Restricted Rights Legend:

Use, duplication, or disclosure by the Government is subject to restrictions set forth in subparagraph (c)(1)(ii) of the Rights in Technical Data and Computer Software clause at 252.277-7013.

About This Guide:

This Quick Start Guide is for assisting system manufacturers and end users in setting up and installing the mainboard. Information in this guide has been carefully checked for reliability; however, no guarantee is given as to the correctness of the contents. The information in this document is subject to change without notice.

If you need any further information, please visit our **Web Site** on the Internet. The address is "<http://www.soyo.com.tw>".

6BA+ Serial - Version 1.1 - Edition: September 1998

* These specifications are subject to change without notice

1 Introduction

Congratulations on your purchase of the **SY-6BA+** Mainboard. This *Quick Start Guide* describes the steps for installing and setting up your new mainboard.

This guide is designed for all users to provide the basic steps of mainboard setting and operation. For further information, please refer to *SY-6BA+ Mainboard User's Guide and Technical Reference* online manual included on the CD-ROM packed with your mainboard.

Unpacking

* If your board comes with a driver disc and a paper manual, the Quick Start Guide and the CD-ROM are not included in the package.

When unpacking the mainboard, check for the following items:

◆ The SY-6BA+ 82440 BX AGP/PCI Mainboard



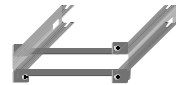
◆ This Quick Start Guide



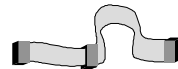
◆ The Installation CD-ROM



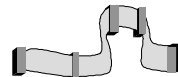
◆ The CPU Retention Set



◆ One IDE Device Flat Cable

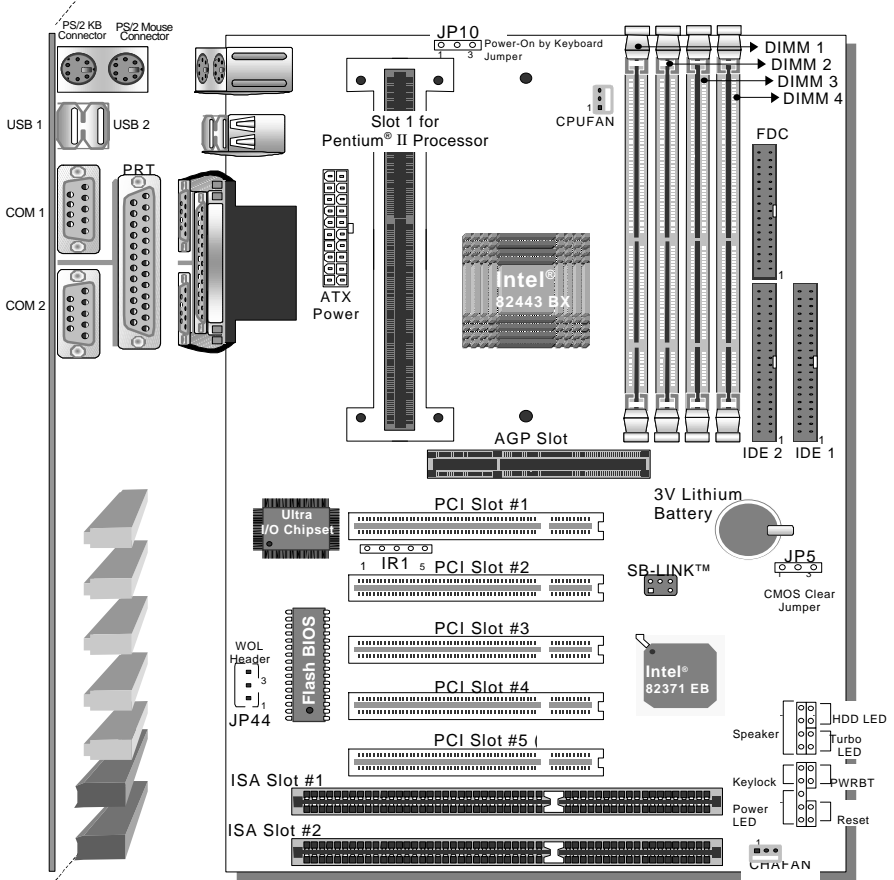


◆ One Floppy Disk Drive Flat Cable



SY-6BA+ Mainboard Layout

Introduction



Key Features

- Supports Intel Pentium® II processor (233-550MHz) & Celeron™ processors(266-366MHz)
- Auto-detect CPU voltage
- PC97, ACPI, Ultra DMA/33MHz
- Power-on by modem or alarm
- SOYO COMBO Setup
- Supports Wake-On-LAN (WOL)
- Supports onboard hardware monitoring and includes Hardware Doctor™ utility
- Supports Creative SB-LINK™ for PCI audio card
- 1 x 32-bit AGP slot
- 5 x 32-bit bus mastering PCI slots
- 2 x USB ports onboard
- 1 x IrDA port
- Supports multiple-boot function
- DMI utility

2 Installation



To avoid damage to your mainboard, follow these simple rules while handling this equipment:

- Before handling the mainboard, ground yourself by grasping an unpainted portion of the system's metal chassis.
- Remove the mainboard from its anti-static packaging. Hold it by the edges and avoid touching its components.
- Check the mainboard for damage. If any chip appears loose, press carefully to seat it firmly in its socket.

Follow the directions in this section designed to guide you through a quick and correct installation of your new **SY-6BA+** Mainboard. For detailed information, please refer to *SY-6BA+ Mainboard User's guide and Technical Reference* online manual included on the CD-ROM packed with your mainboard.

PREPARATIONS

Gather and prepare all the necessary hardware equipment to complete the installation successfully:

- ◆ Pentium® II processor with built-in CPU cooling fan (boxed type)
- ◆ SDRAM module
- ◆ Computer case and chassis with adequate power supply unit
- ◆ Monitor
- ◆ PS/2 Keyboard
- ◆ Pointing Device (PS/2 mouse)
- ◆ VGA Card
- ◆ Sound Card (optional)
- ◆ Speaker(s) (optional)
- ◆ Disk Drives: HDD, CD-ROM, Floppy drive ...
- ◆ External Peripherals: Printer, Plotter, and Modem- (optional)
- ◆ Internal Peripherals: Modem and LAN cards (optional)

SY-6BA+ Quick Start Guide

Install the Mainboard

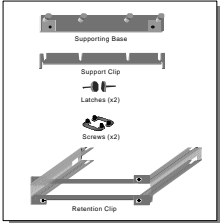
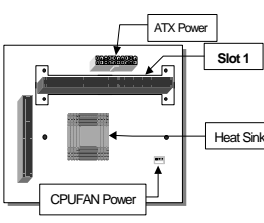
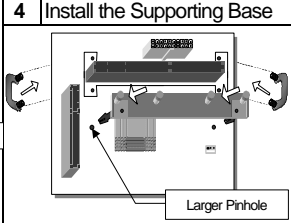
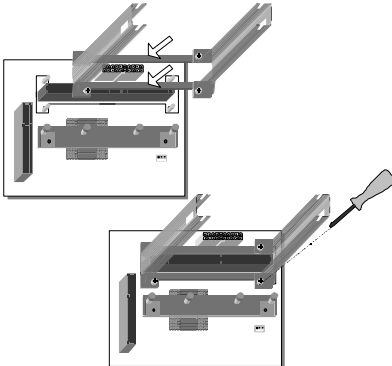
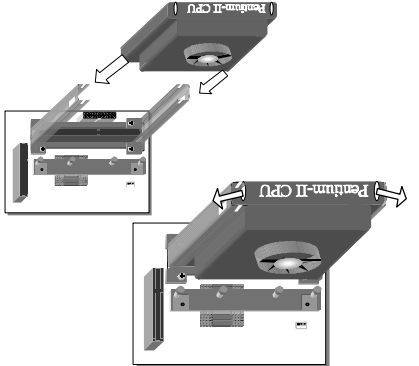
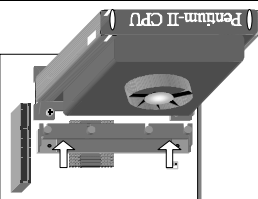
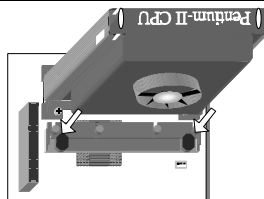

Follow the steps below in order to perform the installation of your new **SY-6BA+** Mainboard.

Step 1. Install the CPU

☑ Mark your CPU Frequency: Record the working frequency of your CPU that should be clearly marked on the CPU cover.

<input type="checkbox"/> 233MHz (66 x 3.5)	<input type="checkbox"/> 300MHz (66 x 4.5)	<input type="checkbox"/> 350MHz (100 x 3.5)	<input type="checkbox"/> 450MHz (100 x 4.5)
<input type="checkbox"/> 266MHz (66 x 4.0)	<input type="checkbox"/> 333MHz (66 x 5.0)	<input type="checkbox"/> 400MHz (100 x 4.0)	<input type="checkbox"/> 500MHz (100 x 5.0)
<input type="checkbox"/> 550MHz (100 x 5.5)	<input type="checkbox"/>		

CPU Mount Procedure: To mount the Pentium® II processor that you have purchased separately, follow these instructions.

<p>1 Unpack the Retention Kit</p> 	<p>2 Position the Mainboard</p> 	<p>3 Insert the Screws</p> <p>4 Install the Supporting Base</p> 
<p>5 Install the Retention Clip</p> 		<p>6 Install the CPU</p> 
<p>7 Install the Support Clip</p> 	<p>8 Insert the Latches</p> 	<p>9</p>  <p>Remember to connect the CPU Cooling Fan to the CPUFAN power connector on the mainboard.</p>

Step 2. Make Connections to the Mainboard

This section tells how to connect internal peripherals and power supply to the mainboard.

Internal peripherals include IDE devices (HDD, CD-ROM), Floppy Disk Drive, Chassis Fan, Front Panel Devices (Turbo LED, Internal Speaker, Reset Button, IDE LED, and KeyLock Switch.), Wake-On-LAN card, VGA card, Sound Card, and other devices.

For more details on how to connect internal and external peripherals to your new SY-6BA+ Mainboard, please refer to *SY-6BA+ Mainboard User's Guide and Technical Reference* online manual on CD-ROM.

Connectors and Plug-ins

PCI Audio Card Header: SB-Link™		Wake-On-LAN Header: JP44	
Connect the SB-Link™ cable from your creative sound blaster PCI audio card to this header.		Connect the WOL cable from your LAN card to JP44.	
CPU Cooling Fan: CPUFAN		Chassis Fan: CHAFAN	
Connect the CPU cooling fan cable to the CPUFAN power connector.		Connect the case cooling fan cable to the CHAFAN power connector.	
USB	TB LED	SPK	
Plug your USB devices to this connector.	Connect your Turbo LED cable to this header.	Connect the speaker cable to this header.	
RESET	IDE LED	KB-LOCK	
Connect the reset button to this heder.	Connect the IDE device LED to this header.	Connect the Power LED and the KB Lock switch to this header.	
rDA (Infrared Device Header): IR1			
Connect the cable from your IrDA device to this header.			
ATX Power On/Off: PWRBT		ATX Power Supply: ATX PW	
Connect your power switch to this header (momentary switch type). To turn off the system, please press this switch and hold down for longer than 4 seconds.		Attach the ATX Power cable to this connector When using the Keyboard Wake-Up function, please make sure the ATX power supply can take at least 720mA load on the 5V Standby lead (5VSB) to meet the standard ATX	

Hardware Installation

SY-6BA+ Quick Start Guide

Step 3. Configure Memory

Your board comes with four DIMM sockets, providing support for up to 1GB of main memory using DIMM modules from 8MB to 256MB. For 66MHz front side bus CPUs use 12ns or faster memory; for 100MHz front side bus CPUs use 8ns (100MHz, PC100 compliant) memory.

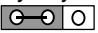
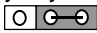
Memory Configuration Table

Number of Memory Modules	DIMM 1	DIMM 2	DIMM 3	DIMM 4
1	1 st			
2	1 st	2 nd		
3	1 st	2 nd	3 rd	
4	1 st	2 nd	3 rd	4 th
RAM Type	SDRAM			
Memory Module Size (MB)	8/16/32/64/128/256 Mbytes			
Note: (1) 256 MB memory modules only available on PC registered DIMM. (2) Always install memory modules in the order prescribed in this table. (3) Do not install unbuffered and registered memory modules together.				

Important: It is of prime importance that you install DIMM modules as outlined in the table above in order to preserve signal integrity on 100MHz front side bus systems.

Step 4. Enable/Disable Power-On by Keyboard (JP10)

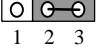
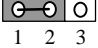
You can choose to enable the Power-On by Keyboard function by shorting pin 1-2 on jumper JP10, otherwise, short pin 2-3 to disable this function.

Power-On by Keyboard	Enable	Disable
JP10 Setting	Short pin 1-2 to enable the Power-On by Keyboard function.  1 2 3	Short pin 2-3 to disable the Power-On by Keyboard function.  1 2 3

Important: When using the Power-On by Keyboard function, please make sure the ATX power supply can take at least 700mA load on the 5V Standby lead (5VSB) to meet the standard ATX specification.

Step 5. Clear CMOS Data (JP5)

Clear the CMOS memory by momentarily shorting pin 2-3 on jumper JP5 for at least 5 seconds, and then by shorting pin 1-2 to retain new settings. This jumper can be easily identified by its white colored cap.

CMOS Clearing	Clear CMOS Data	Retain CMOS Data
JP5 Setting	Short pin 2-3 for at least 5 seconds to clear the CMOS. 	Short pin 1-2 to retain the new settings. 
Note: You must unplug the ATX power cable from the ATX power connector when performing the CMOS Clear operation.		



The SY-6BA+ provides over-clocking capability. Due to the over-clocking setting your system may fail to boot up or hang during run time. Please perform the following steps to recover your system from the abnormal situation :

1. Turn off system power.
2. Press and hold down the <Insert> key while turning on the system power. Keep holding down the <Insert> key until you see the message of the CPU type and frequency shown on the screen.
3. Press the key during the system diagnostic checks to enter the Award BIOS Setup program.
4. Select [SOYO COMBO SETUP] and move the cursor to the [CPU Frequency] field to set the proper working frequency.
5. Select [Save & Exit SETUP] and press <Enter> to save the new configuration to the CMOS memory, and continue the boot sequence.

Note: SOYO does not guarantee system stability if the user over clocks the system. Any malfunctions due to over-clocking are not covered by the warranty.

3 Quick BIOS Setup

This mainboard does not use any hardware jumpers to set the CPU frequency. Instead, CPU settings are software configurable with the BIOS **[SOYO COMBO SETUP]**. The **[SOYO COMBO SETUP]** menu combines the main parameters that you need to configure, all in one menu, for a quick setup in BIOS.

After the hardware installation is complete, turn the power switch on, then press the **** key during the system diagnostic checks to enter the Award BIOS Setup program. The CMOS SETUP UTILITY will display on screen. Then, follow these steps to configure the CPU settings.

Step 1. Select **[STANDARD CMOS SETUP]**

Set **[Date/Time]** and **[Floppy drive type]**, then set **[Hard Disk Type]** to "Auto".

Step 2. Select **[LOAD SETUP DEFAULT]**

Select the "LOAD SETUP DEFAULT" menu and type "Y" at the prompt to load the BIOS optimal setup.

Step 3. Select **[SOYO COMBO SETUP]**

Move the cursor to the **[CPU Frequency]** field to set the CPU frequency.

Available **[CPU Frequency]** settings on your SY-6BA+ Mainboard are detailed in the following table. If you set this field to **[Manual]**, you are then required to fill in the next two consecutive fields: (1) the CPU Host/PCI Clock, and (2) the CPU Ratio.

CPU Frequency		Select the working frequency of your Pentium® II processor among these preset values. Note: <input checked="" type="checkbox"/> Mark the checkbox that corresponds to the working frequency of your Pentium® II processor in case the CMOS configuration should be lost.
<input type="checkbox"/> 233MHz (66 x 3.5)	<input type="checkbox"/> 400MHz (100 x 4.0)	
<input type="checkbox"/> 266MHz (66 x 4.0)	<input type="checkbox"/> 450MHz (100 x 4.5)	
<input type="checkbox"/> 300MHz (66 x 4.5)	<input type="checkbox"/> 500MHz (100 x 5.0)	
<input type="checkbox"/> 333MHz (66 x 5.0)	<input type="checkbox"/> 550MHz (100 x 5.5)	
<input type="checkbox"/> 350MHz (100 x 3.5)	<input type="checkbox"/>	

Note: if you use Bus Frequencies of 75 MHz, make sure that your PCI cards can cope with the higher PCI clock.

Step 4. Select **[SAVE & EXIT SETUP]**

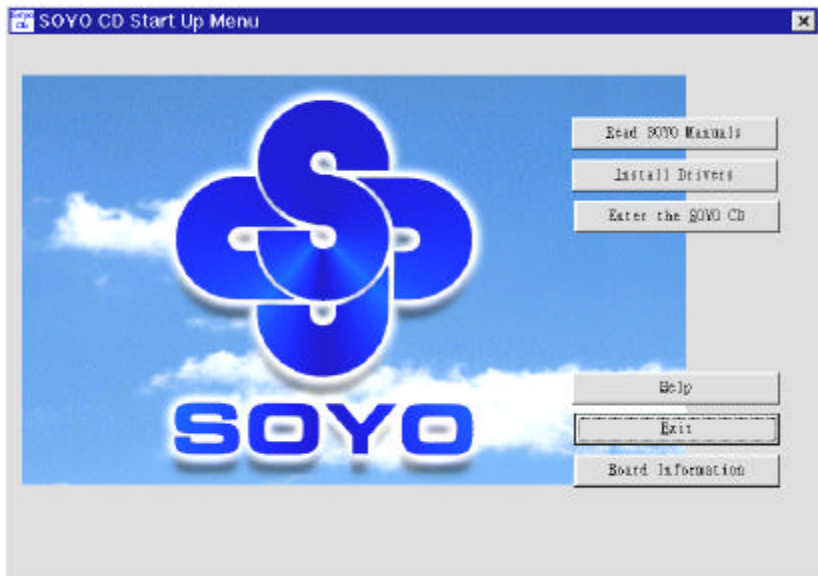
Press **<Enter>** to save the new configuration to the CMOS memory, and continue the boot sequence.

4 The SOYO CD

Your SY-6BA+ Mainboard comes with a CD-ROM labeled "SOYO CD." The SOYO CD contains the user's manual file for your new mainboard, the drivers software available for installation, and a database in HTML format with information on SOYO mainboards and other products.

Step 1. Insert the SOYO CD into the CD-ROM drive

The SOYO CD will auto-run, and the SOYO CD Start Up Menu will display as shown below.



(SOYO CD Start Up Program Menu)

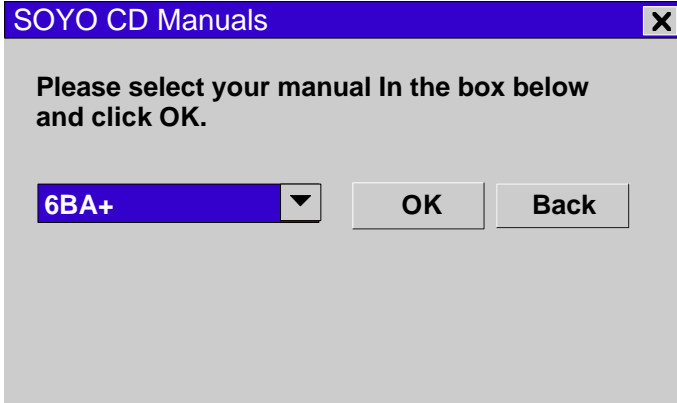
The SOYO CD Start Up Program automatically detects which SOYO mainboard you own and displays the corresponding model name.

Step 2. Read SOYO [model name] Manual

Click the **Read Manual** button to open the user's manual file of your mainboard.

SY-6BA+ Quick Start Guide

Please note that if the Start Up program was unable to determine which SOYO mainboard you own, the manual selection menu will pop up, as shown below. Then select the user's manual file that corresponds to your mainboard model name and click **OK**.



(Manual Selection Menu)

The user's manual files included on the SOYO CD can be read in PDF (Postscript Document) format. In order to read a PDF file, the appropriate Acrobat Reader software must be installed in your system.

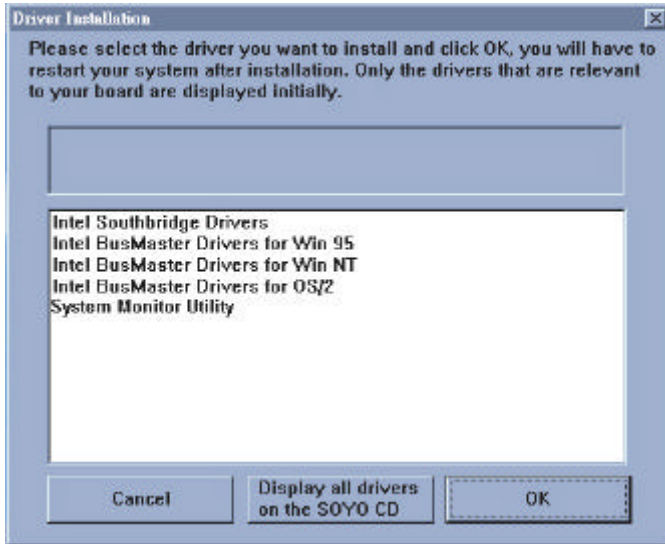
Note: The Start Up program automatically detects if the Acrobat Reader utility is already present in your system, and otherwise prompts you on whether or not you want to install it. You must install the Acrobat Reader utility to be able to read the user's manual file. Follow the instructions on your screen during installation, then once the installation is completed, restart your system and re-run the SOYO CD.

Step 3. Install Drivers

Click the **Install Drivers** button to display the list of drivers software that can be installed with your mainboard. The Start Up program displays the drivers available for the particular model of mainboard you own. We recommend that you only install those drivers.

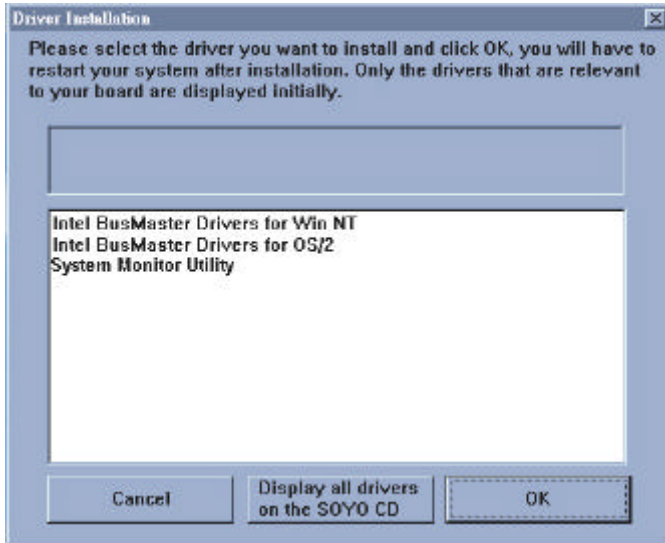
However, to display the list of all drivers software available with SOYO mainboards, click the **Display all drivers on the SOYO CD** button. Please make sure to install only the drivers adapted to your system, or otherwise this cause system malfunctions.

The following drivers are available for Windows 95



(Driver Installation Menu)

The following drivers are available for Windows 98



(Driver Installation Menu)

SY-6BA+ Quick Start Guide

Select which driver you want to install and click **OK**, or click **Cancel** to abort the driver installation and return to the main menu.

Note: Once you have selected a driver, the system will automatically exit the SOYO CD to begin the driver installation program. When the installation is complete, most drivers require to restart your system before they can become active.

Step 4. Enter the SOYO CD

Click the **Enter SOYO CD** button to enter the SOYO HTML database. The Start Up program will activate the default HTML browser installed on your system (for example, Internet Explorer or Netscape) to visualize the contents of the SOYO CD.

The SOYO CD contains useful information about your mainboard and other SOYO products available in as many as eleven different languages. For your convenience, this information is available in HTML format, similar to the format widely used on the Internet.



(SOYO CD HTML Database in English*)

(* The list of menu options may vary between languages)

Note: If no HTML browser is installed on your system, the Start Up program will prompt you on whether or not you would like to install the Internet Explorer* browser. Click YES to install the HTML browser. After the installation is complete, please restart your system. Then re-run the SOYO CD and you will be able to browse the SOYO HTML database.

(* Internet Explorer is a Microsoft Trademark)

Edition: Sep. 1998

Version 1.1

6BA+ SERIAL

International Headquarters

Soyo Computer Inc., (Taiwan)

Tel: 886-2-2290-3300

Fax: 886-2-2298-3322

Web Site: <http://www.soyo.com.tw>

E-mail: info@mail.soyo.com.tw

USA Branch Office

Soyo Tek Inc., (USA)

Tel: (408) 452-7696

Fax: (408) 573-7696

Web Site: <http://www.soyousa.com>

E-mail: sales@soyousa.com

SOYO Europe

Soyo Europe B.V., (Holland)

Tel: 31-79-3637500

Fax: 31-79-3637575

Web Site: <http://www.soyo-europe.com>

<http://www.soyo.nl>

E-mail: Sales@soyo.nl

Germany Branch Office

SAAT Technology GmbH, (Germany)

Tel: 49-(0)444-204044

Fax: 49-(0)444-203422

Web Sites: <http://www.saat.de>

<http://www.soyo-saat.de>

<http://www.soyo-saat.com>

Email: sales@saat.de

UK Branch Office

Soyo (U.K.) Ltd.

Tel: 44-(0)181-569 4111

Fax: 44-(0)181-569 4134

Web Site: <http://www.soyo.nl>

E-mail: sales@soyo.nl

Japan Branch Office

Soyo Computer (Japan)

Tel: 81-3-33682188

Fax: 81-3-33682199

Web Site: <http://www.soyo.co.jp>

E-mail: soyo@po.ijnet.or.jp

Hong Kong Branch Office

Soyo Hong Kong Ltd. (H.K.)

Tel: 852-2710-9810

Fax: 852-2710-9078

Web Site: <http://www.soyo.com.hk>

E-mail: rshu@hkstar.com